



Find the right fit for you

Education Careers



MENTONE | BENTLEIGH EAST | PHILLIP ISLAND

St Bede's College



FROM OUR PRINCIPAL

A warm welcome to St Bede's College



We're an inclusive and independent community of globally aware, positive contributors to the world around us. It's our mission to teach students from diverse backgrounds to live 'by right paths' to become confident, caring, socially just and resilient individuals.

Driven by Catholic and Lasallian values of faith, service and community, St Bede's College is the school of choice not just for families and their children, but also for passionate education professionals who want to support each student to achieve their personal best.

Our College Community is proud to nurture and develop young people as 'whole beings' in an innovative and dynamic learning environment. It's this that provides them with the skills to flourish in today's and tomorrow's world. Ours encompasses the academic, creative, sporting, cultural, spiritual, emotional, social and community aspects of learning.

This vision is made possible only with the inclusion of like-minded education professionals who share our mission, our values and are driven by a sense of purpose to find fulfilment and success in the service of others.

It's our dedicated teaching cohort that brings to life a special kind of joy and impact that comes from shaping individuals on their journey through life.

We're so proud of what our Community of educators, students, families, staff and alumni continue to achieve. And we'd love for you to be a part of our future and our legacy.

*Per Vias Rectas
(By Right Paths)*

Deb Frizza
Principal



We acknowledge the traditional custodians of this land, the Bunurong people of the Kulin Nation, whose ancient wisdom nurtured these lands and waters for millennia. We pay our respects to their elders, both past and present. May we always walk together by right paths.

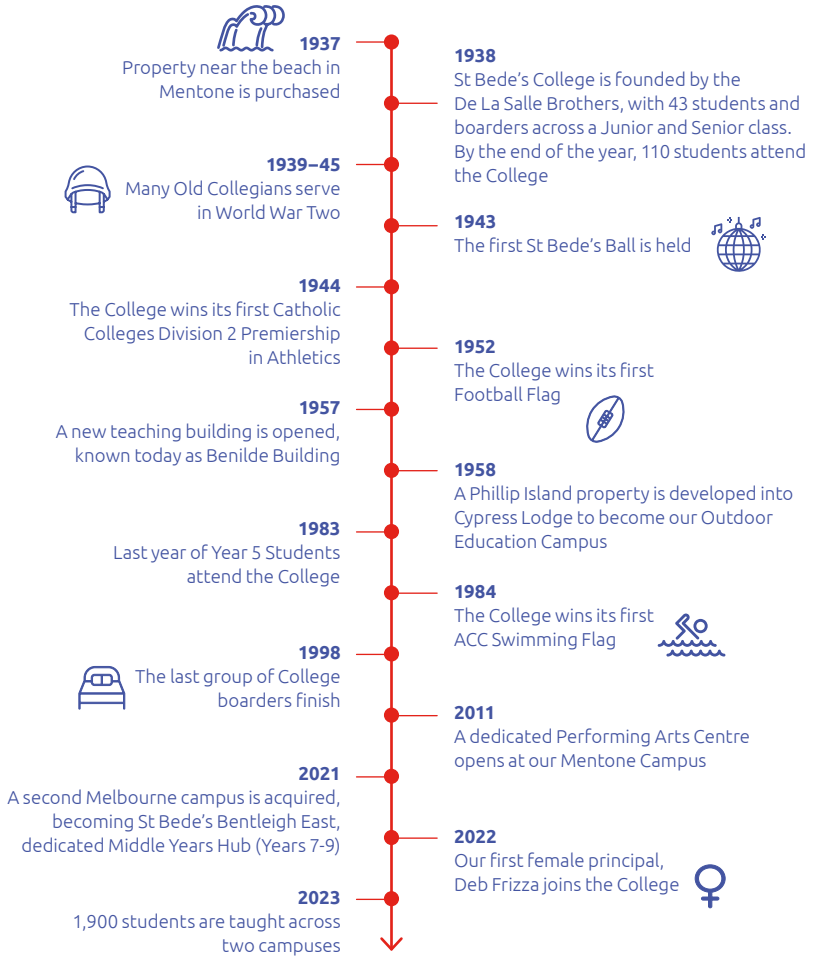


85 years of educational excellence

For generations, families across Melbourne's bayside and south-eastern suburbs have chosen St Bede's College as the place for their child's life-long education. Since 1938, it has become a well-known, much-loved and iconic place of welcome for students, their families and our teachers.

We've since grown to a three-campus College, offering endless opportunities for students and teachers to achieve their personal best. We look forward to building on our rich history across the generations to come.

OUR TIMELINE





Our values

At St Bede's College, we affirm the intrinsic worth of all students in our care.

We seek to foster a love of learning.

We see education as a means of broadening students' minds and enriching the human experience.

We seek to send into the world individuals with strong values, resilient characters and deep reserves of confidence.

5 Core principles of Lassallian schools



TEACHING LIFE

Find the right fit for you

Choosing a school to begin or expand your fulfilling teaching career is all about finding the right fit for you.

At St Bede's College, we believe that a workplace should be welcoming, inclusive and supportive. A place where you can completely and authentically show up as yourself each day.



We know that happy, supported teachers mean happy, successful students.

We pride ourselves on delivering this environment, with great professional and personal benefits and opportunities for teachers including:

- **Mentorship program** for first-year teachers
- **Ongoing support** regular meetings with our first-year cohort
- **Teacher Development Program** to nurture your continuous growth as an educator
- **Reduced workload** in first year, giving you more time to refine your teaching skills

- **Diverse skills development** across a broad subject range
- **Early opportunities** to teach at all levels (Years 7 to 12) early in your career
- **Flexibility** to work across two campuses, Mentone and Bentleigh East
- **Diverse co-curricular experiences** a wide range of opportunities to support students across activities including public speaking, debating, performance, music, sport (ACC) and more
- **Great locations** with onsite parking (Bentleigh East and Mentone) and easy access from nearby public transport (Mentone)
- **Professional Learning Program** embedded across the year within the school day
- **Resilience Project** partner with learning opportunities and regular events
- **Staff Wellbeing Framework** as part of our whole-school approach to wellbeing
- **Annual Staff Retreat** with wellbeing workshops
- **Employee Assistance Program** for extra support whenever you need it
- **Leadership opportunities** throughout your career, with wide-ranging experiences and a bespoke leadership program
- **Strong community connection** with a great, diverse and friendly team of teaching staff, social events, volunteering opportunities and community outreach
- **Indigenous Immersion Programs** offering valuable cultural and travel experiences, both local and interstate
- **International Outreach Programs** via our Global Lasallian Community connections



OUR CAMPUS FACILITIES AND SERVICES

Building for tomorrow's leaders

Mentone Campus

YEARS 7 – 12

Perched high across sprawling grounds overlooking Mentone beach, students can enjoy unrivalled connection to nature beyond the purpose-built facilities at our iconic Mentone Campus.

With dedicated zones for Middle Years and Senior Years, all students have great connectivity to the wider College Community, and benefit from a broad and diverse perspective.

Bentleigh East Campus

YEARS 7 – 9

At our Middle Years Hub for Years 7 - 9, students enjoy a seamless transition from Primary to Secondary school, in a dedicated environment with more spaces and opportunity to thrive.

From day one, students enjoy a very strong connection to our Mentone Campus across these three years. Upon completion of Year 9, they join as Year 10s at Mentone to complete their Senior years at St Bede's College.

Cross-campus facilities & systems

- Dedicated Performing Arts Centre
- Dedicated Digital Technology and Materials Technology Hub
- Food Technology Hub
- Science labs
- Visual Arts Centre
- Sports stadium and gym
- Google Suite school, with access to all relevant programs for teaching, learning and communication
- New Learning Management System (Digital / Data Analytics) for more time efficiency
- Dedicated staff offices, ergonomic, modern, well-equipped staff common room

Student services, support and wellbeing

- 1:1 laptop (notebooks)
- Strong support program comprising counselling, psychology, dedicated therapy dog, behaviour support framework and pastoral, allowing teachers to maintain educational focus



- Inclusivity in action group, OneBeda, open to all students to discuss opportunities and challenges for LGBTQIA+, multiculturalism, Indigenous peoples and more in a safe space
- Partnership with The Resilience Project for access to helpful materials on wellbeing strategies
- Learning Diversity Program – support for those with additional needs, enrichment for gifted and talented students

Student subjects

YEARS 7 & 8

- Religious Education
- Arts (Art, Drama, Music)
- English
- Languages (Indonesian, Italian)
- Mathematics
- Science
- Health and Physical Education
- Humanities (Geography, History)
- Design and Technology (Materials Technology)
- Digital Technology (STEM)

YEARS 11 & 12

There are 38 Victorian Certificate of Education (VCE) subjects on offer, with VCAL / VET pathways available to support a flexible and diverse range of student interests and needs.

- Religious Education (Text and Traditions, Religion and Society)
- Art (Visual Communication and Design)
- Drama and Music (VET Music, Music Performance, Theatre Studies, Media)
- English (English Language, Literature)
- Languages (Italian, Indonesian)
- Mathematics (Mathematical Methods, General Further Mathematics, Specialist Mathematics)
- Science (Biology, Chemistry, Physics, Psychology, Environmental Science)
- Humanities (20th Century History, Australian and Global Politics, Geography)
- Commerce (Business Management, Accounting, Economics, Legal Studies)
- Health and Physical Education (Health and Human Development, Outdoor and Environmental Studies)
- Design and Technology (Product Design and Technology, Systems Engineering)
- Digital Technologies (Applied Computing – Data Analytics, Software Development)



TEACHING WITH US

St Bede's College Pedagogical Charter

Vision

St Bede's College is a learning community underpinned by the principles of a Catholic education in the Lasallian tradition.

Learning supports the flourishing of each student across the cognitive, social, physical, emotional, cultural and spiritual domains.

St Bede's College nurtures positive, authentic relationships where students are known, valued and understood.

Learning is a collaborative partnership between students, teachers, families, and the wider Community.

Our classrooms are dynamic and inclusive environments that support student centred learning. Teaching practices embrace learning diversity, build on students' strengths and cater for each student's learning needs.

Learners are energised to seek meaning, think critically and deeply and imagine possibilities for the future.

PRINCIPLES

Supportive learning environments

Learning environments are characterised by positive relationships and the engagement of students in challenging, meaningful learning.

Coherent curriculum

The curriculum is an explicit, sequenced plan for delivery that makes clear what is important for teachers to teach and students to learn.

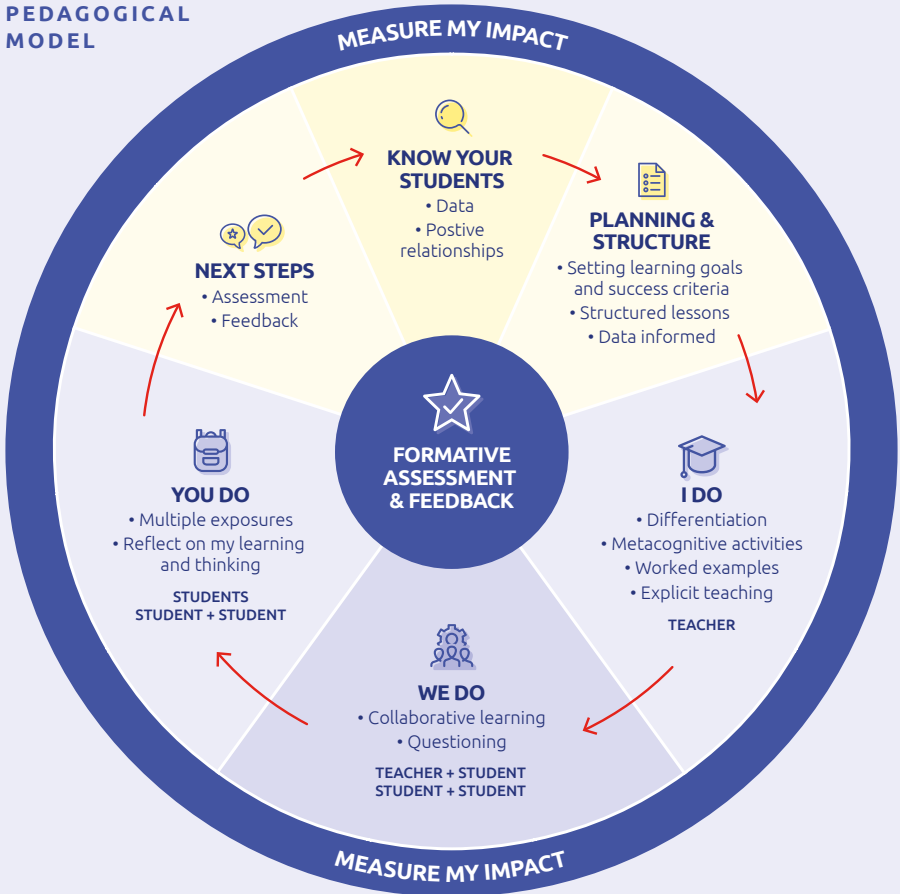
Evidence-based teaching strategies

High impact, evidence-based instructional practices, tools, and strategies are embedded in teacher practice to improve student outcomes.

Community partnerships

Teachers engage Parents / Carers in student learning, progress, and wellbeing. Strategic community partnerships are established with local and global organisations and service providers to enhance student learning and wellbeing.

PEDAGOGICAL MODEL



High expectations for every student

All students are supported to be highly literate and numerate and to become reflective, questioning, and self-regulated learners.

High quality assessment

Assessment is valid, timely, accessible, and plays an integral role in improving learning and informing teaching.

Global citizenship

Learning connects to real-world contexts. Students develop knowledge, skills, and dispositions for lifelong learning.

Teaching about learning

Learning is a collaborative process between teachers and students. Metacognitive strategies are explicitly taught and promoted to support students to set learning goals and to articulate and evaluate their progress.



TEACHING WITH US

A Teaching Career at St Bede's

OVERVIEW

As a teacher at St Bede's College, you actively support our Mission and Vision, and have a healthy respect for our Catholic and Lasallian values.

You're committed to facilitating student learning by providing a variety of evidence-based teaching strategies to engage learners and cater for individual needs. You're collaborative with your students and colleagues, with a particular focus on improving learning and teaching outcomes.

Our teachers are models of lifelong learning. We value a culture of collegiality, collaboration and support within the Community to prioritise educational excellence. Your teaching is informed by and reflects current professional best practice.

Attributes and Competencies

- A clear focus on teaching, learning and wellbeing of students.
- Demonstrate an understanding of the legal requirements surrounding Child Safety.
- A firm belief in and commitment to our Mission and Vision, and an ability to articulate and promote these.
- A lively and practical support to the Catholic nature of the College.
- A demonstrable ability to actively engage students in learning, demonstrating its collaborative and active nature.
- Maintain confidentiality on information about students and fellow staff members.
- Exhibit ongoing professional and personal growth for the benefit of the College Community, including participation in different Professional Learning activities on offer.
- Demonstrate professional and collegiate relationships with colleagues.
- Uphold the professional standards expected of a teacher.

Specific Duties

- Contemporary Teaching & Curriculum Development.
- Understand and adhere to professional requirements including the Australian Professional Standards for Teachers, the VIT Code of Conduct and CECV policies.
- Keep abreast of curriculum requirements as mandated by VCAA (VCE and Victorian Curriculum) and MACS (Religious Education).
- Understand, contribute to and follow Learning Area course and assessment requirements. This includes the planning, development, review and evaluation of curriculum in the learning areas and the year levels at which you teach. Ensure that resources and course outlines are stored on SIMON for the benefit of the College.
- Give appropriate time to lesson planning and organisation.
- Employ a variety of evidence-based teaching strategies to engage learners and cater for individual learning needs, with a particular focus on Visible Learning.

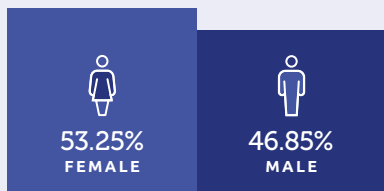
- Monitor the progress of each student and make use of contemporary feedback models to provide meaningful advice on how students can improve their academic performance.
- Engage with colleagues in learning progress discussions using data and work samples.
- Attend Parent-Student-Teacher Interviews and provide individual feedback to students and their Parents / Carers regarding academic progress.
- Adhere to St Bede's College Feedback, Assessment and Reporting Policies from Years 7 to 12, particularly in the provision of common assessment tasks.
- Keep accurate records of student attendance.
- Embrace the use of information and communications technologies to enhance learning.
- Liaise with appropriate support staff in the implementation of the curriculum.
- Attend and participate in Professional Learning Teams program and Learning Area Meetings as scheduled.

Pastoral Care and Child Safety

- Provide students with a child-safe environment at all times.
- Comply with the College's Child Safe Policy and Code of Conduct, and any other policies or procedures relating to Child Safety.
- Proactively monitor and support student wellbeing.
- Demonstrate duty of care to students in relation to their physical and mental wellbeing.
- Implement strategies which promote a healthy and positive learning environment.



STAFF RATIO



As at July 2023.

Child Safety

St Bede's College holds the care, safety and wellbeing of its students at the core of all we do.

We are resolutely committed to ensuring that all staff of the College act in a manner that promotes the inherent dignity of each of our students and their fundamental right to be respected and nurtured in a safe school environment.

This commitment includes regular and appropriate learning opportunities in relation to child safety and young people's protection and wellbeing.

Professional Learning

- Commit to ongoing professional learning in your teaching areas.
- Be open to researching areas of interest relevant to directions provided in the school's strategic plan.
- Continue development of ICT skills as technologies evolve.
- Engage in self-reflection practices, including participation in an Annual Review Meeting.
- Support collegial learning by acting as a mentor or supervising and supporting pre-service teachers.
- Commit to ongoing professional learning in your teaching areas.

- Be open to researching areas of interest relevant to directions provided in the school's strategic plan.
- Contribute to the learning of other teachers by sharing resources, giving presentations at meetings in an area of interest, and reporting on any Professional Learning undertaken.

Co-Curricular Involvement

- Support and be involved in the co-curricular program.
- Proactively encourage students to participate in co-curricular activities.
- Act as a role model for participating students.
- Keep accurate records of student attendance and participation within the co-curricular activity.
- Create and maintain a safe environment in which students may enjoy their participation.
- Oversee the provision and care of relevant equipment materials and first aid requirements.

General and Administrative Duties

- Contribute to a healthy and safe work environment for yourself and others and comply with all safe work policies and procedures.
- Maintain currency of first aid, mandatory reporting and anaphylaxis and asthma training.
- Attend all relevant school meetings and after school services, assemblies, sporting events, mass, community and faith days as well as professional learning opportunities.
- Participate in duty supervision as rostered and other supervision duties when required.
- Other duties as directed by the Principal.



Ready to find the right fit?

Visit stbedes.catholic.edu.au/careers
to express your interest in and apply
for Education Careers at St Bede's College.



stbedescollege.catholic.edu.au

**MENTONE
CAMPUS**

Years 7 to 12

2 Mentone Parade
Mentone VIC 3194

**BENTLEIGH EAST
CAMPUS**

Years 7 to 9

156 Bignell Road
Bentleigh East VIC 3165

**PHILLIP ISLAND
CAMPUS**

Cypress Lodge

73 Beachcomber Ave
Smiths Beach VIC 3922